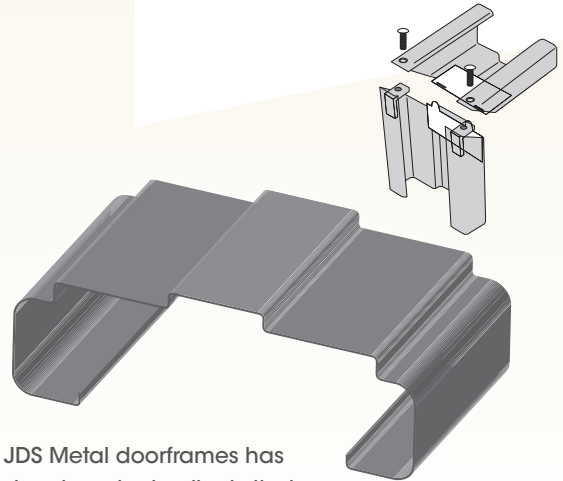


# JDS Deluxe

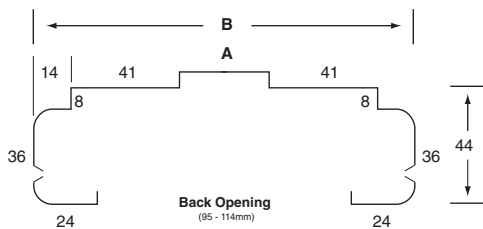
## knockdown doorframes to suit stud construction



The JDS Deluxe Knockdown is used for stud frame construction. JDS Metal doorframes has decided to manufacture the Deluxe profile in the knockdown system to cater to clients that are renovating or adding an extension to their property, using stud frame construction and would like to keep the same profile as existing doorframes. The patented knockdown design system allows the mitre corners to be adjusted, resulting in an accurate and neat mitre joint.

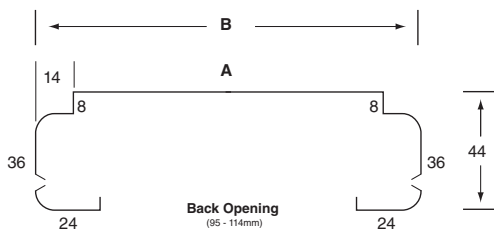
### Technical Specifications

The JDS Deluxe Knockdown doorframe is made from a 1.05mm Zincaneal. The frames come in 3 pieces consisting of a head, a hinge stile and a striker stile. These are then packed together to make a complete frame. The knockdown frame is available in all standard sizes and can also be made to suit special widths and heights.



#### Standard Frame Dimensions

Back Opening	A	B
95	33	143
114	52	162



#### Slider Frame Dimensions

Back Opening	A	B
95	115	143
114	134	162

Note: when ordering slider doorframes please order by door size.

Prior to installing the frame ensure stud opening sizes are suitable for knockdown frames.

For stud opening sizes add 40mm to your door HEIGHT and WIDTH (single and double doorframes only)

Example: Door size: 2040 x 820mm Stud opening: 2080 x 860mm

Add a further 40mm to your door width for each mullion when using triple, quad or five door combinations.

**Note: A minimum nib on each side of the stud opening is needed to allow for the knockdown frame to be screwed to the stud work**

Patented knockdown system